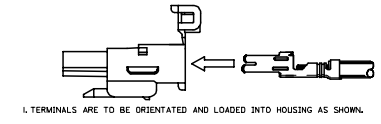
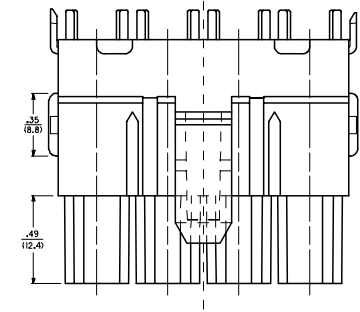
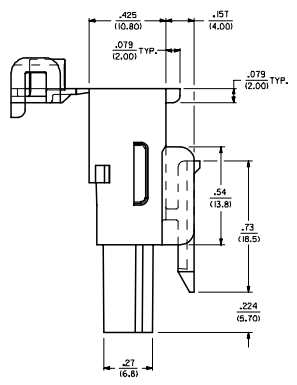
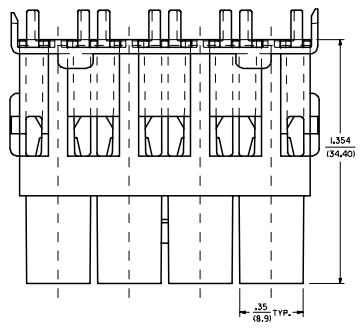
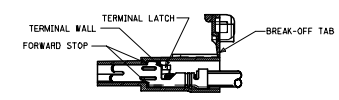


ITEM NUMBER	CIRCUIT SIZE	"A"
42816-0212	2	12.7
42816-0312	3	19.1
42816-0412	4	25.4
42816-0512	5	31.7
42816-0612	6	38.1

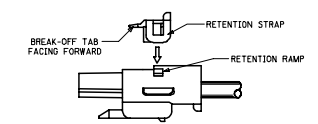
LEGEND:
42816 - ** 1 2
CIRCUIT SIZE (02-06)
T.P.A. OPTION
2 = WITH T.P.A.



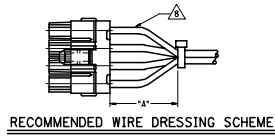
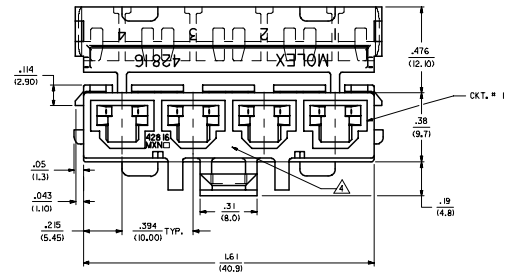
1. TERMINALS ARE TO BE ORIENTATED AND LOADED INTO HOUSING AS SHOWN.



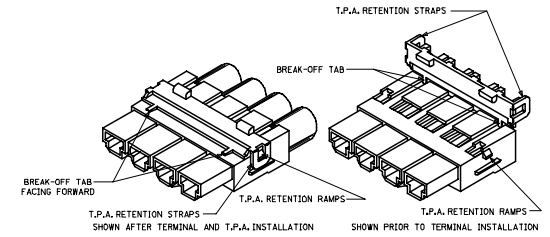
2. TERMINALS ARE LOADED WHEN SEATED AGAINST FORWARD STOP AND TERMINAL LATCHES ARE SHIPPED BEHIND TERMINAL WALLS. RETENTION FORCE AT THIS STAGE = 0.5 Kg.



3. AFTER TERMINALS ARE LOADED INTO HOUSING, T.P.A. IS TO BE "BROKEN OFF", ORIENTATED AND INSTALLED IN THE DIRECTION SHOWN UNTIL THE RETENTION STRAPS SNAP OVER THE RETENTION RAMP. THIS PRODUCT MUST NEVER BE USED WITHOUT THE INSTALLATION OF THE T.P.A.



RECOMMENDED WIRE DRESSING SCHEME



- NOTES**
- MATERIAL:
1 = POLYESTER, PBT, ULL, 94V-0, COLOR MOLDED BLACK.
 - PART IS FOR USE WITH FEMALE CRIMP TERMINAL *42815.
 - PART IS DESIGNED IN METRIC.
 - NO CORE-OUTS UNDER LATCH ON 2,4 & 6 CIRCUIT PARTS.
 - PART MATES WITH MINI-FIT SR, PLUG 42818-***2.
 - ITEM NUMBERS THAT ARE PRECEDED BY AN "X" ARE NOT AVAILABLE.
 - DUE TO THE BREAKAWAY DESIGN OF THE T.P.A. COVER, A FEW MAY HAVE PREMATURELY SEPARATED FROM THEIR HOUSINGS DURING SHIPMENT. IF A HOUSING IS MISSING A T.P.A. COVER, IT CAN BE FOUND IN THE SHIPPING CONTAINER.
 - EACH WIRE MUST BE DRESSED SUCH THAT THE TERMINAL MAINTAINS ITS FREE FLOAT WITHIN THE HOUSING. SEE CHART FOR RECOMMENDED CABLE TIE PLACEMENT.
 - FOR PACKAGING INFORMATION SEE PK-42816-001.
- * THIS PRODUCT MUST NEVER BE USED WITHOUT THE T.P.A. ***

REDRAWN IN METRIC DATE: 2005/06/17 CHKD: JOMERC APPR: JOMERC DATE: 2005/06/17	QUALITY SYMBOLS 0 0	GENERAL TOLERANCES (UNLESS SPECIFIED) mm INCH 4 PLACES ± .--- ± .--- 3 PLACES ± .010 2 PLACES ± 0.25 ± .016 R/J 1 PLACE ± 0.40 ± .--- ANGULAR ± 1/2°	DIMENSION STYLE IN/MM DRAWN BY DATE CHECKED BY DATE APPROVED BY DATE DATE: 1/31/96 DATE: 1/31/96 DATE: 1/31/96	SCALE 4:1 DESIGN UNITS METRIC	THRD ANGLE PROJECTION RECEPT, HOUSING SINGLE ROW MINIFIT SR, MOLEX INCORPORATED	MATERIAL NO. SEE CHART DOCUMENT NO. SD-42816-***2	SHEET NO. 1 OF 1
		DRAFT WHERE APPLICABLE MUST REMAIN WITHIN DIMENSIONS	THIS DRAWING CONTAINS INFORMATION THAT IS PROPRIETARY TO MOLEX INCORPORATED AND SHOULD NOT BE USED WITHOUT WRITTEN PERMISSION				